

THE PARENT CONNECTION

Mary, Star of the Sea Early Learning Center
 "Providing Quality Early Education"

Established in 1980
 Educationally Excellent
 Distinctively Catholic
 Uniquely Innovative
NAEYC ACCREDITED
AMS MEMBER



www.staroftheseaelc.org

Parent Newsletter
 May 2019
 Vol. 38, No. 9
 (808)734-3840
WCEA ACCREDITED
NCEA MEMBER

MAY/ JUNE CALENDAR OF EVENTS

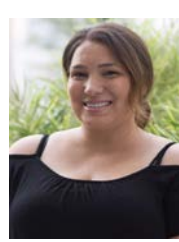
May

- | | | |
|---------------|--------------------|--|
| 3 | Friday | Boys' Day Celebration/ Free Dress for Boys; Also Cinco de Mayo
Boys Can Bring Small Item for Morning Circle Sharing |
| 6-10 | Mon-Friday | Teacher Appreciation Week, "TEACHERS ARE OUT OF THIS WORLD!"
(i.e. favorite toy, book, etc.)
Birthday Celebration @ 2:15 PM |
| 12 | Sunday | Happy Mothers' Day! |
| 17 | Friday | Distribution of Report Cards |
| 21 | Tuesday | Fire & Emergency Drill, 8:30 AM |
| 23 | Thursday | ELC Kindergarten Graduation, 1:00 PM, MSOS Church, Celebration to Follow at the ELC |
| 24 | Friday | Last Day of School, Mini Day-11:15 AM Dismissal, RSVP Day Care Provided
Kindergarteners Graduates Welcomed Back! 9:15 AM, Brazilian Capueta Demonstration, ELC Lanai Area |
| 27 | Monday | No School, Memorial Day |
| 28 -31 | Tues-Friday | School Closed for Maintenance. Cleaning & Summer Session I Set-Up |

2018-2019 ELC Parent Teacher Guild *All-STARs*



Taryn Kumamoto Chair	Tracy Camuso Co-Chair	Lani Kubo Secretary	Jeff Hushley Treasurer	Noelani Takeyesu EHFF Co-Chair	Kristi Noa Special Projects
--------------------------------	---------------------------------	-------------------------------	----------------------------------	--	---------------------------------------



EHFF: A STARRY NIGHT

PARENTS, FAMILIES & FRIENDS
THANK YOU FOR ALL YOUR SUPPORT!





Jerusalem: The Easter Story

Mary, Star of the Sea Early Learning Center opened its Atrium in fall 2018. Our Center instituted a new religion curriculum called The Catechesis of the Good Shepherd that is Montessori based, hands-on, and developmentally appropriate for young children. Our students visit the Atrium once a week for lessons and to work with materials. In April 2019, our students learned about the ancient city of Jerusalem and the story of Easter. The story begins with an introduction to the structures on the map of Jerusalem: the temple, the Cenacle, Mount of Olives, House of Caiaphas, Herod's Palace, Praetorium, Calvary, and the Tomb of the Resurrection. The story of Easter is then told tracing the last movements of Christ on the map as they unfold. This beautiful story ends with a song about our Risen Lord and how his ultimate sacrifice resulted in our redemption. After the presentation, students may then use this activity to re-tell the story.



TEACHER & STAFF APPRECIATION WEEK

May 6-10, 2019

Theme: *Out of this World!*



Since 1984, National PTA (National Parent Teacher Association) has designated one week in May as a special time to honor the men and women who lend their passion and skills to educating our children. PTA events at the national, state and local levels celebrate the outstanding contributions teachers make. Teachers change the lives of millions of children every day, and their work and impact extends far beyond the boundaries of the classroom. They play a pivotal role in our children's lives, inspiring a lifelong love of learning and discovery and making a difference in their well-being and long-term success. Mary, Star of the Sea Early Learning Center will celebrate and honor teachers and staff during the week of

April 6-10, 2019. Let's show our thanks and gratitude to these stellar educators. *Blast off* with us during Teacher Appreciation Week to thank teachers and staff for all that they do to help our children reach for the stars!



